



Realigning Our Footprint For The Next Generation Of Chicago's Children

January 23, 2013

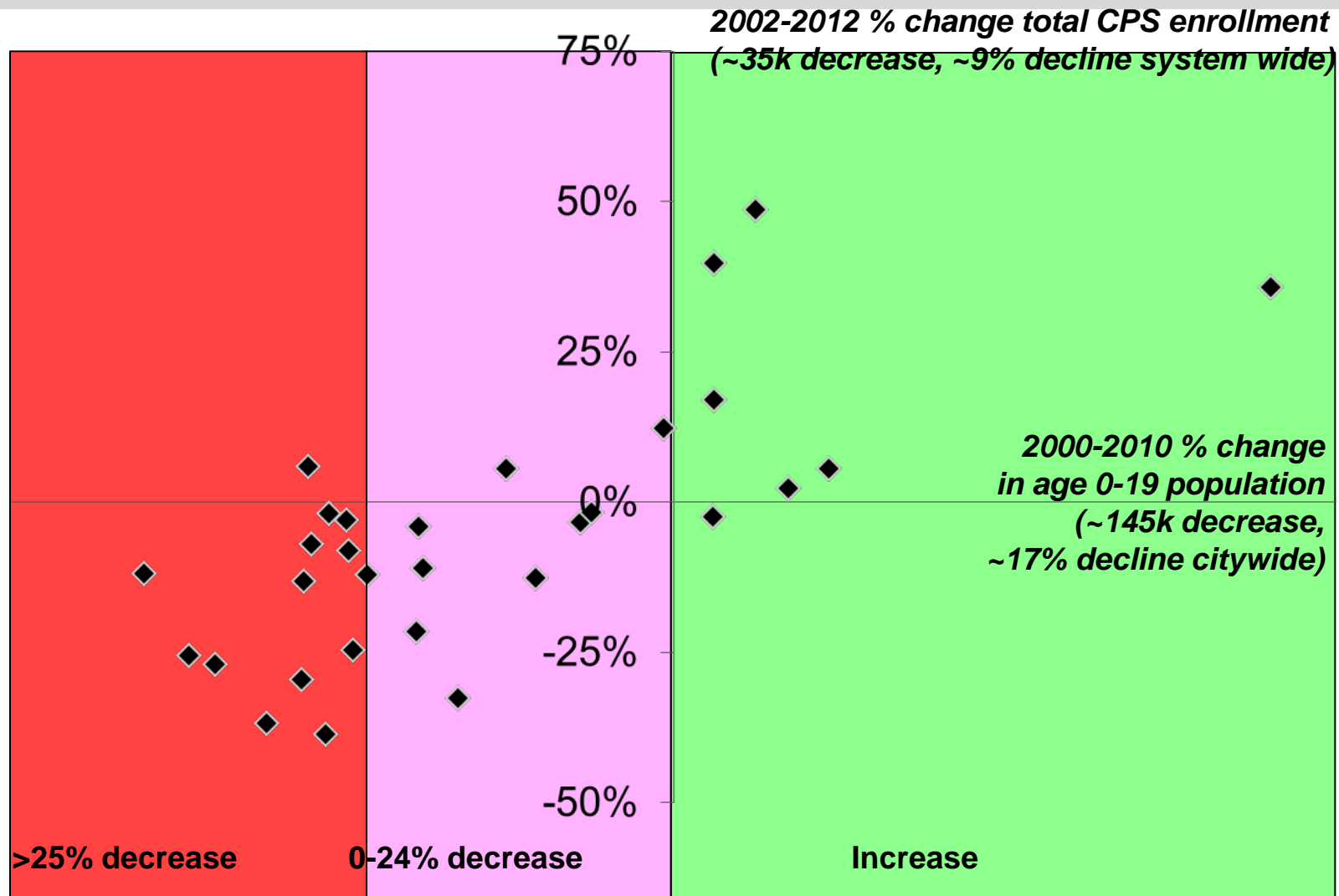
What we aspire to deliver for our students . . .

- Vibrant schools that prepare all students for college, career and life
- Warm, safe, and dry buildings that create positive learning environments
- Rigorous, well-rounded instructional programs and supports that meet the needs of all students
- Committed and effective school leaders, teachers and staff and engaged and empowered families and communities

The challenges facing CPS. . .

- \$1 billion budget deficit in Fiscal Year 14
- Significant population drops that created severely underutilized facilities, especially on south and west sides
- Too many buildings that don't provide safe, secure, or positive learning environments, with costly capital needs and lack basics – playgrounds, new technology, libraries, etc.
- Schools without enough resources to prevent split-grade classrooms and ability to invest in critical programs that support student growth
- Limited resources spread too thinly across the District

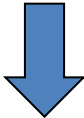
CPS enrollment decline slower than overall population but still decreasing and in-line with population declines



Source: 2000 and 2010 US Census, CPS enrollment data

Can isolate impact of CPS student population changes and choice on the enrollment of a neighborhood school

Total enrollment at a school with a neighborhood boundary



Can be impacted by increases or decreases in:

CPS population

CPS students living in neighborhood boundary

CPS students living outside of boundary that may attend school through open enrollment

Choice

% of students from outside the boundary that choose to attend school through open enrollment

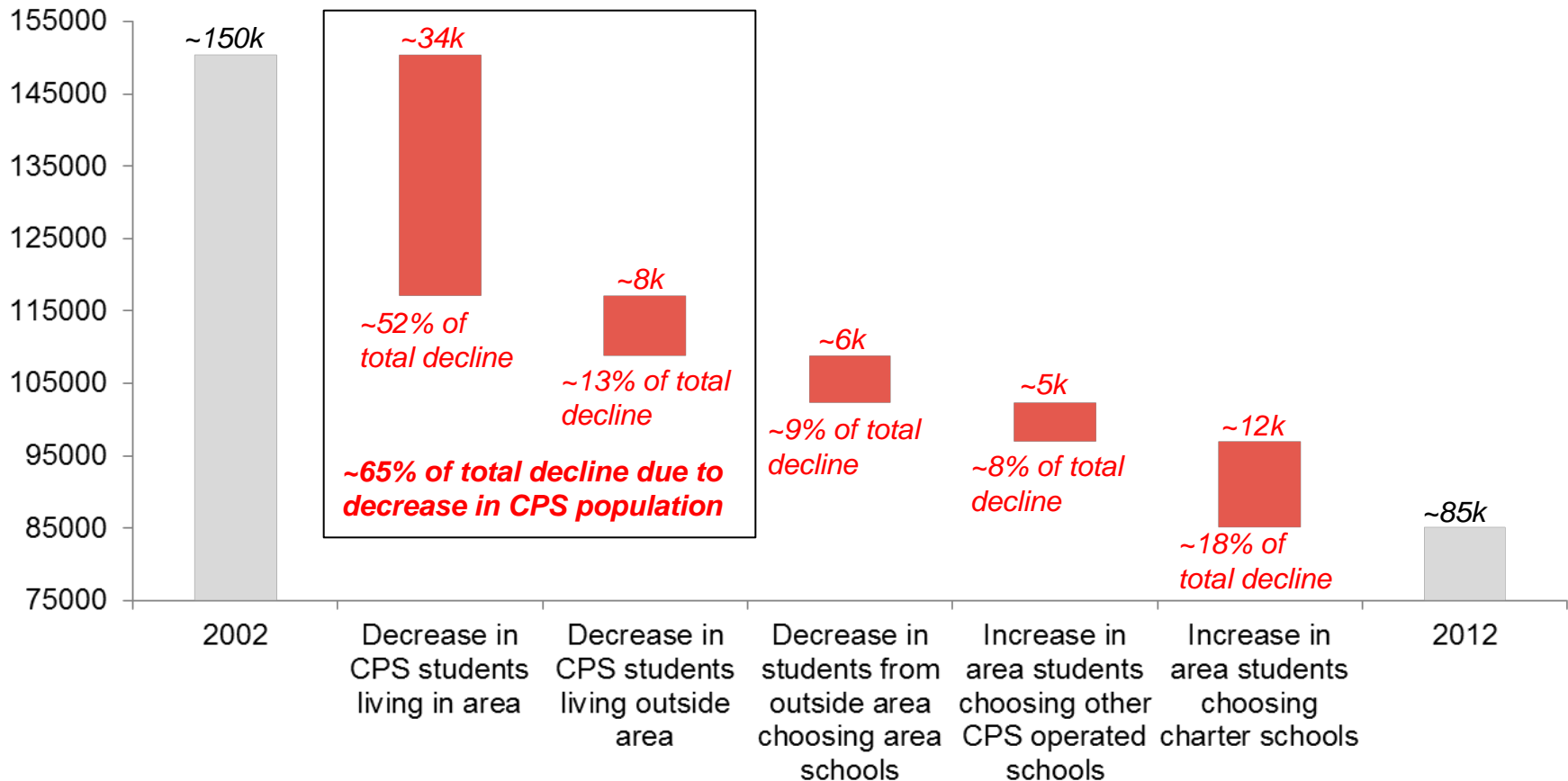
% of students from inside the boundary that choose to attend a different CPS operated school

% of students from inside the boundary that choose to attend a charter school



In underutilized areas, approximately 2/3 of neighborhood elementary school enrollment decline due to decrease in CPS population

Total enrollment of ES with neighborhood boundaries in geographic areas with <80% utilization



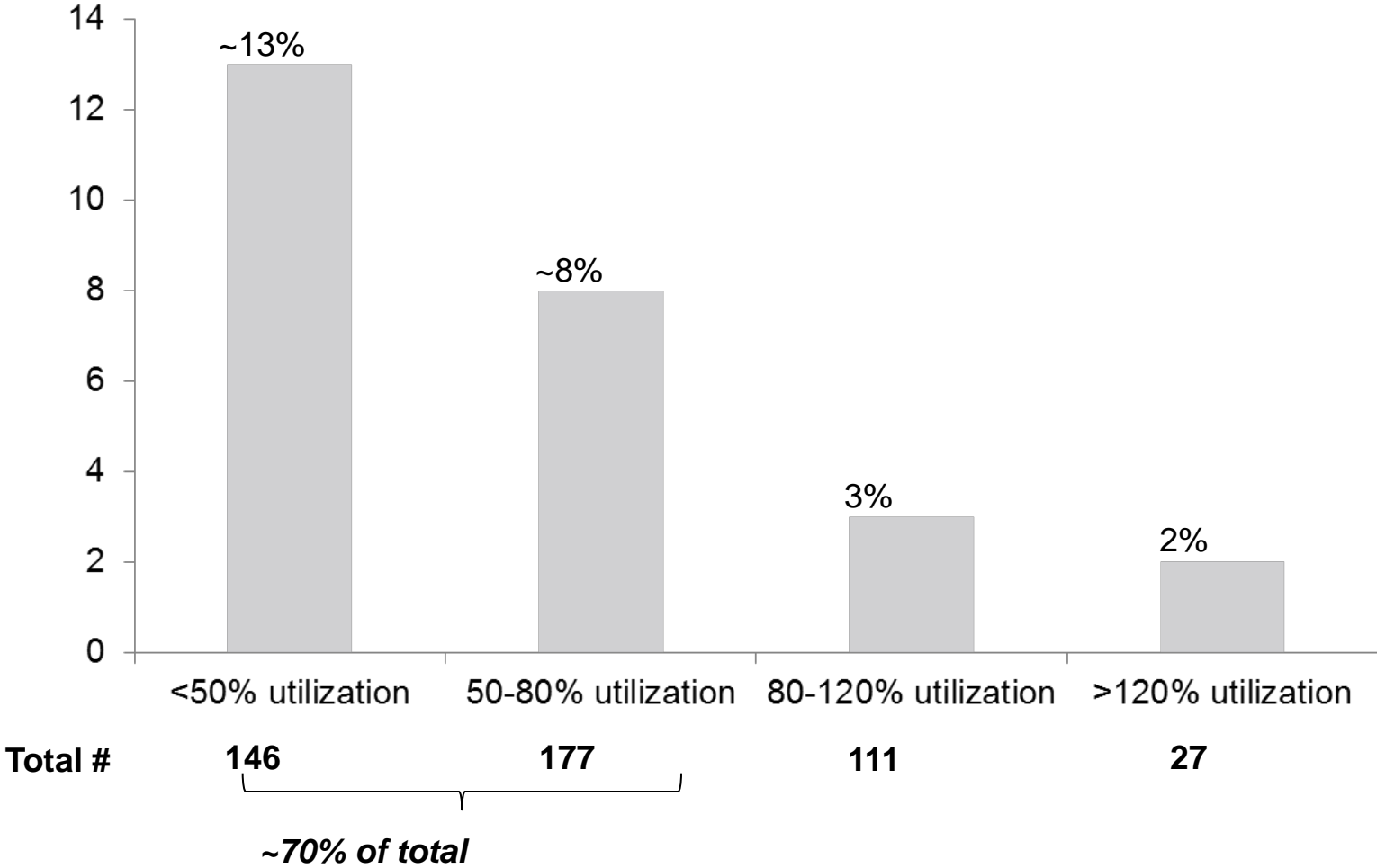
CPS population impact

Choice impact

Note: includes middle schools
Source: CPS enrollment data

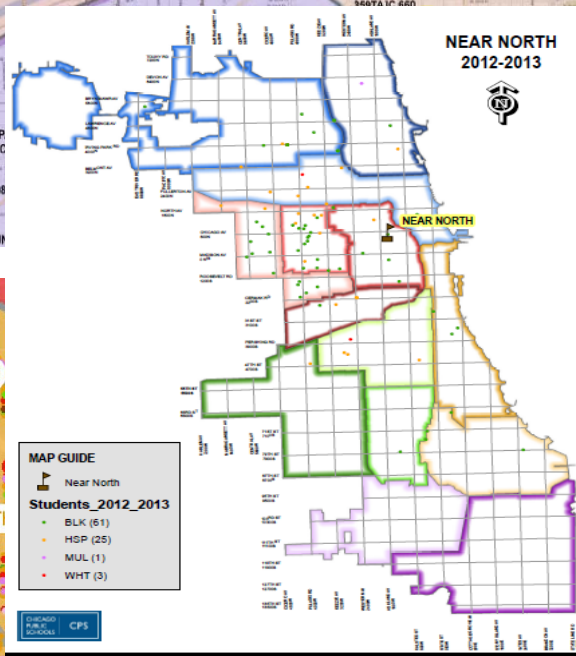
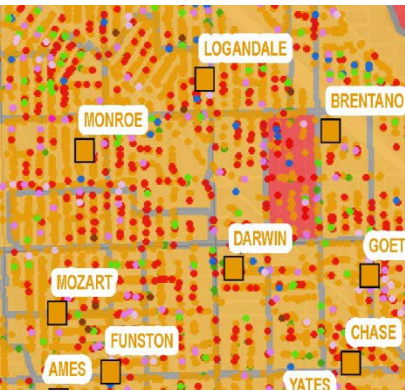
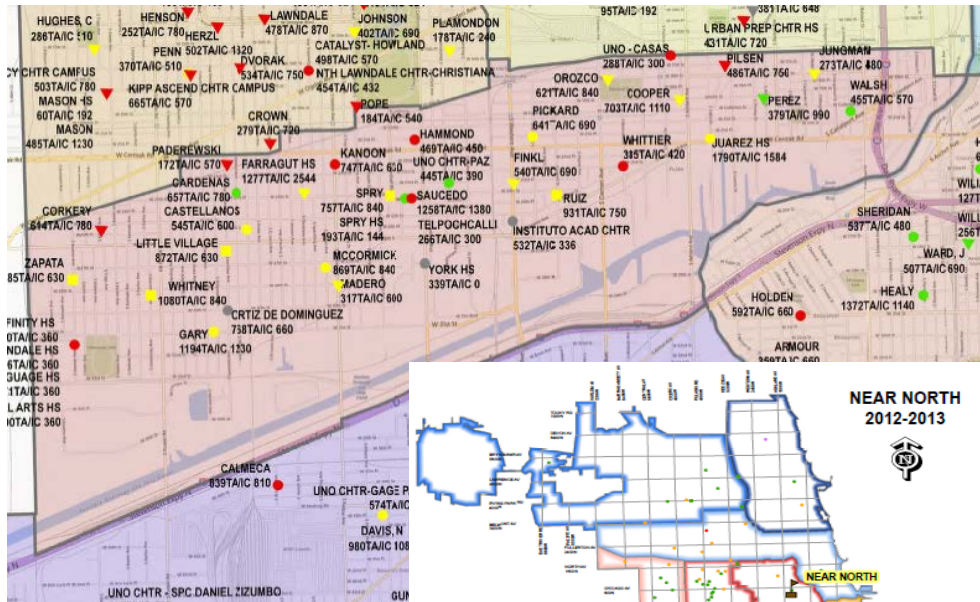
Underutilized schools are more likely to have split grade homerooms, represent 7 of 10 split grade homerooms citywide

% elementary school homerooms with split grades



Source: CPS enrollment data. Non-SPED, non-alternative, CPS operated schools

We are approaching this serious work with rigor. . .



- **Community engagement and input at the front-end of the process**
- **Enrollment trends**
 - Numbers enrolled, historical and expected
 - Understanding of neighborhood demand
- **Access to higher performing academic options**
 - Performance levels and trend of nearby schools
 - Space to accommodate students at those schools
 - Ability to take entire student population vs. multiple schools
- **Safety and security**
 - Where students who go to the school actually live
 - Natural barriers
 - Gang/neighborhood conflicts
- **Building quality**
 - Expected costs to maintain/update the building over the next 10 years
 - ADA accessibility
 - Recent investments
 - AC, playgrounds, libraries, technology, etc.

... and also have Principals validating how buildings currently are being used



Our Transition Vision & Goals

Our Vision:

On the first day of SY 2013-2014, all students attending welcoming schools will experience a safe and seamless transition.

Our Goals

As a team of professionals dedicated to creating a positive learning environment for every student, we will:

- Foster a transition environment that is positive, nurturing and respectful
- Assure timely execution of comprehensive logistics and refurbishment programs
- Recruit, train, and deploy Network and School transition teams to advocate for / inform students and their families
- Coordinate a building reutilization process that considers community needs and accomplishes release of CPS fiscal liability.

Transition Planning: Key priorities

Higher Performing Options for Students and Families

- Families receive a designated, higher-performing welcoming school and understand how to access other options
- Multiple avenues to access transition resources: Transition plans, web portal, counselors, and hotline

Student Support Transition Plan

- Safety & Security is first priority
- Establish an individual student plan that includes: Instruction, wraparound services, and other student needs
- Monitor and track student progress to course correct

Building Reutilization

- Partner with other city agencies, and community organizations to create a community planning process
- Collaborate with CACs, LSCs, and other community representatives to identify highest and best use of facilities

What Success Looks Like...

Our Report Card:

- ✓ Fulfill promises to students
 - Provide supports to create rigorous learning environments
 - Provide positive climate and culture support
 - Give students and families a voice through welcoming school choice
- ✓ Resources efficiently and effectively invested in welcoming schools to maximize student supports
- ✓ Deliver necessary resources and support to welcoming schools to ensure a safe, positive learning environment for all students
- ✓ Responsible uses for closed buildings identified, with thorough, specific plans for re-use in place; kept secure and safe